

EMC-RFI Suppression Filters 1-phase systems



FKHD/FKID Series, combi-filters to Protection Class I, conform to EN 133200, UL 1283 and IEC 60950

Nominal current: 1 - 10 A @ ϑ_a 40°C
Rated voltage U_R (U_{max}): 250 VAC 50/60 Hz
Attenuation: Hight
Leakage current: for Standard and Medical applic.
Test voltage: L/N → E 2.7 kVDC, 2 sec
 L → N 1.7 kVDC, 2 sec *
Climatic category: 25/085/21 acc. to IEC 60068-1
Degree of protection : IP 40 (operating face)
50% saturation typ.: 2 to 3 x I_N @ 20°C
Inrush current: 1.5 x I_N 1 min. per hour
MTBF @ 40°C / U_R (U_{max}): > 200'000 h acc. to MIL-HB-217 F

*without resistor

Approvals:



Also available version FKxD2-50-y/I-A with aluminium-case!

Combi-filter 2-stage, 2-pole switch, with drawer for 1 or 2 fuse(s), connector conforms to IEC 60320-1/C14. This filter range has been developed to provide improved attenuation, mainly in the lower frequency range. It is a 2-stage filter to complement the FK single stage version.

These filters are suitable for use as interference suppressor where high asymmetric attenuation is required.

The range offers the following combinations:

FKHD connector + 2-pole switch + drawer for 1 fuse 5 x 20 mm

FKID connector + 2-pole switch + drawer for 2 fuses 5 x 20 mm

Special versions for medical applications are also available.

Technical Data

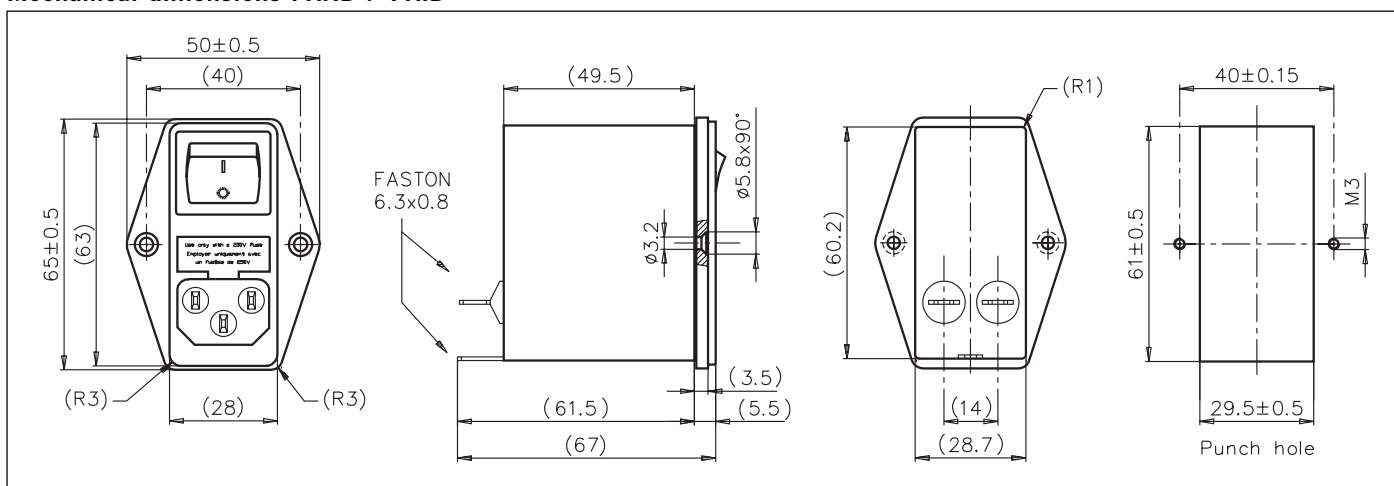
Type	I_N (1) @ ϑ_a 40°C [A]	U_R (U_{max}) [V]	L_N (2) ·30% / +50% [mH]	Leakage curr. (3) @ 250 V/50 Hz [mA]	Fuse insert F1 F2
FKHD2-50-1/I	1	50/60 Hz 250V	2 x 10	< 0.25	5x20 —
FKHD2-50-2/I	2		2 x 4	< 0.25	5x20 —
FKHD2-50-4/I	4		2 x 1.5	< 0.25	5x20 —
FKHD2-50-6/I	6		2 x 0.8	< 0.25	5x20 —
FKHD2-50-10/I	10		2 x 0.3	< 0.25	5x20 —
FKID2-50-1/I	1		2 x 10	< 0.25	5x20 5x20
FKID2-50-2/I	2		2 x 4	< 0.25	5x20 5x20
FKID2-50-4/I	4		2 x 1.5	< 0.25	5x20 5x20
FKID2-50-6/I	6		2 x 0.8	< 0.25	5x20 5x20
FKID2-50-10/I	10		2 x 0.3	< 0.25	5x20 5x20

(1) Current derating over 40°C : $I = I_N \times \sqrt{(85 - \vartheta_a) / 45}$

(2) Nominal inductance measured according to EN 138100, see introduction of this catalog, paragraph 3.4

(3) Measured according to IEC 60950 5.2.3 Annex D, see introduction of this catalog, paragraph 3.5

Mechanical dimensions FKHD / FKID



Insertion loss (typical) FKHD / FKID

